

MONTHLY MEMBERSHIP PROGRESS REPORT

LOCATION ALBERTA

District C 2

Results as of: 6/30/2021

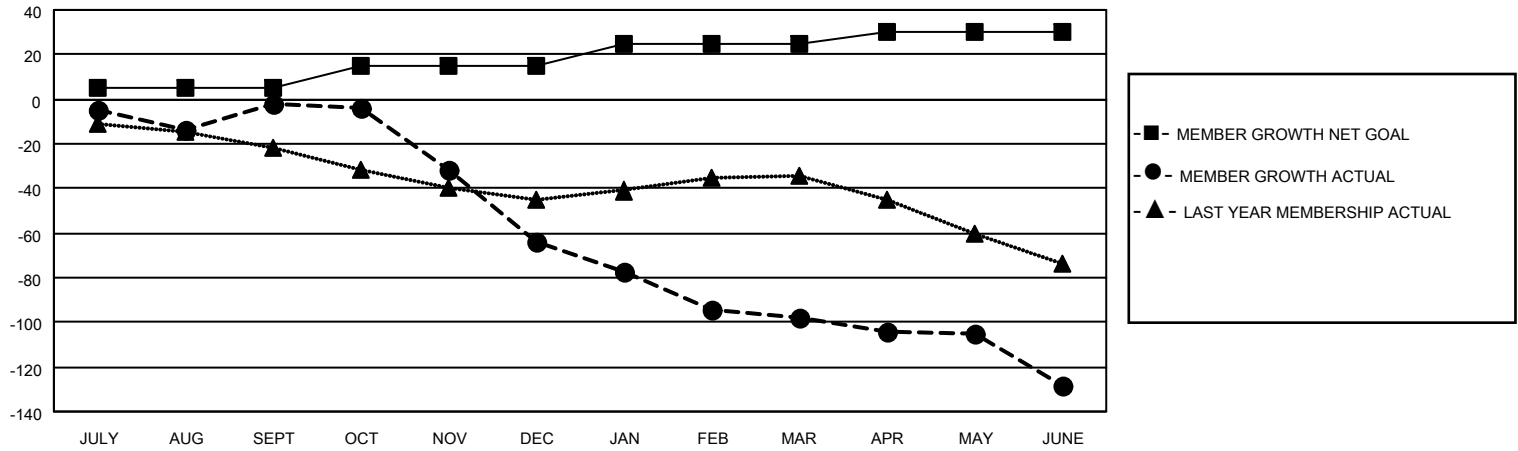
Clubs			
RESULTS FOR 2020-2021			
QUARTER	NEW CLUB GOAL	NEW CLUBS	DROPPED CLUBS
JULY/AUG/SEPT	0	0	0
OCT/NOV/DEC	1	0	1
JAN/FEB/MAR	0	0	2
APR/MAY/JUNE	1	0	0

Members			
RESULTS FOR 2020-2021			
QUARTER	MEMBER GROWTH NET GOAL	MEMBER GROWTH ACTUAL	DROPPED MEMBERS ACTUAL (including transfers)
JULY/AUG/SEPT	5	43	41
OCT/NOV/DEC	10	50	98
JAN/FEB/MAR	10	19	49
APR/MAY/JUNE	5	15	40

GOALS AND ACTUAL NEW CLUBS CUMULATIVE



GOALS AND ACTUAL MEMBERS CUMULATIVE



DROPPED CLUBS: 3	31 CLUBS OF 90 ADDED 1 OR MORE NEW MEMBERS	<u>GENDER DISTRIBUTION</u>
<u>DROPPED MEMBERS</u>	CLICK HERE FOR CUMULATIVE MEMBERSHIP DATA	MALE 1,414 (74.74%)
DECEASED 29		FEMALE 478 (25.26%)
CLUB CANCELLED 14		TOTAL FAMILY UNIT MEMBERS 261
OTHER 185		FAMILY MEMBERS PAYING HALF DUES 135
TOTAL 228		